



**GLOMAC**  
*Centro*

# HIP & HAPPENING BUSINESS HUB

IN THE HEART OF PJ-DAMANSARA



## PRACTICAL LAYOUT

- Flexible & functional layout
- Practical design with boulevard walkway



## COMPLETED & READY FOR TENANTS

- Immediate residential population from serviced apartments
- Booming surrounding neighbourhood



## STRATEGIC LOCATION

- In the vicinity of Bandar Utama & Damansara Jaya
- Connected via major highways such as SPRINT, NKVE & LOP

**Strata Units For Sale:**  
Shoplot | Offices  
1,286 sqft | 1,638 sqft

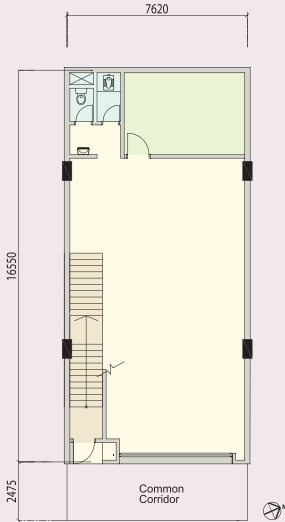
Sales Gallery Opens Monday - Sunday From 10am - 6pm

For more information, call:  
**1800 88 9000 / 03 7723 9101**  
or visit [www.glomac.com.my](http://www.glomac.com.my)

GLOMAC KRISTAL SDN BHD 791194-H  
Level 1, Menara Glomac, Glomac Damansara,  
Jalan Damansara, 60000 Kuala Lumpur, Malaysia  
T 03 7723 9101 F 03 7729 7000 E [sales@glomac.com.my](mailto:sales@glomac.com.my)  
W [www.glomac.com.my](http://www.glomac.com.my)

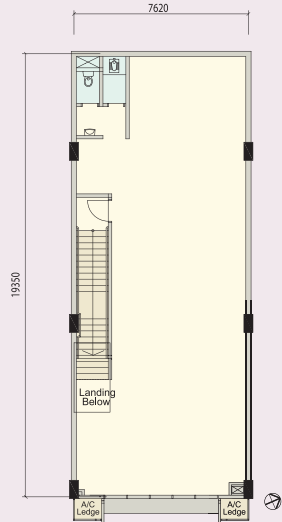
## 2-STOREY SHOP-OFFICES FLOOR PLANS\*

### GROUND FLOOR



INTERMEDIATE TYPICAL LOT  
119.42 sq.m. / 1,285.47 sq.ft.

### FIRST FLOOR



INTERMEDIATE TYPICAL LOT  
152.17 sq.m. / 1,637.99 sq.ft.

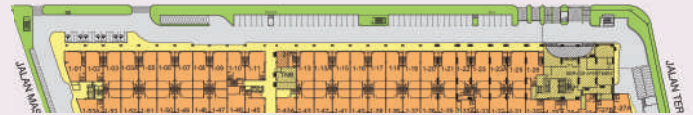
### BUILDING SPECIFICATIONS\*\*

STRUCTURE	Reinforced Concrete Structure Frame
BRICK	Masonry Bricks
ROOF	Reinforced Concrete Slab and / or Metal Roofing Sheet
CEILING	Shop - Skim Coat & Paint to RC Soffit and Suspended Ceiling where required
WINDOWS	Not Available
DOORS	Roller Shutter to Shop
IRONMONGERY	Generally Quality Lock Set
FLOOR FINISHES	Shop - Cement Render Basin area - Porcelain Tiles
WALL FINISHES	Shop - Plaster and Paint Basin area - Ceramic Tiles 7ft high
SANITARY FINISHES	Basin - 1 Nos

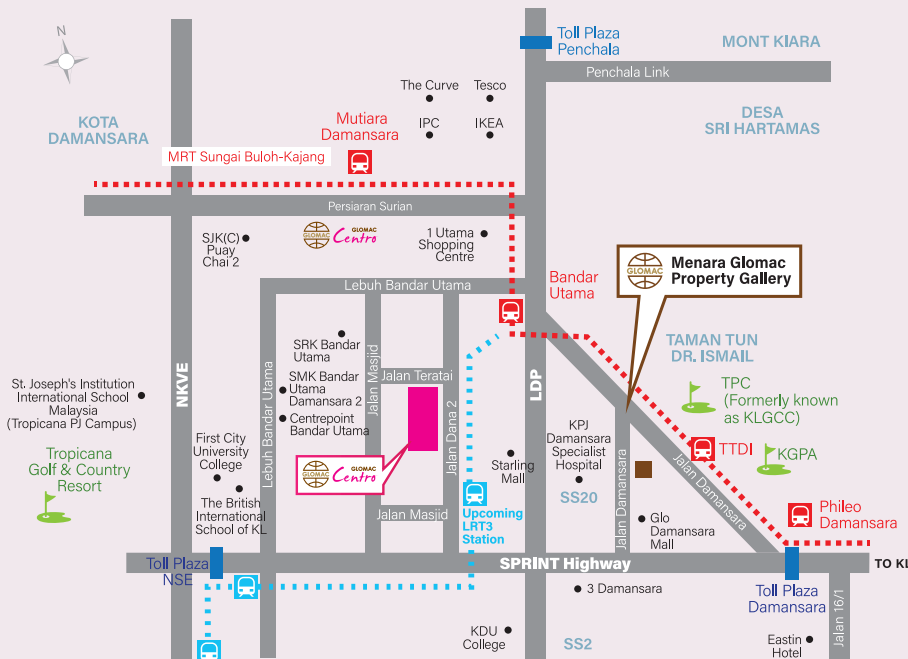
M&E INSTALLATIONS	Shop
Lightning Point	3
13A Power Point	2
A/C Point	1
Telephone Fiber Wall Socket	1
30A SPN DB	1

\*\*Please note that the above specifications only apply to each floor unit respectively.

### LAYOUT PLAN



## PRIME PJ - DAMANSARA VALUABLE LOCATION



### APPROXIMATE DISTANCE FROM GLOMAC CENTRO TO:

- SPRINT Highway 5 km
- NKVE 10 km
- Penchala Link 15 km
- Federal Highway 20 km
- Kerinchi Link 20 km