



GLOMAC
Centro

LIVE IN COMFORT & CONVENIENCE

IN THE HEART OF PJ-DAMANSARA
SERVICE APARTMENT



PRACTICAL LAYOUT

Built up from 1,175 sqft



1.5KM

Distance from MRT Bandar Utama Station



0.5KM

Distance from future LRT3 line



Comprehensive

FACILITIES



EASY ACCESIBILITY

via major highways:
SPRINT, NKVE & LDP



Extensive Surrounding

AMENITIES & SHOPPING MALLS

Ready to
move in

Partially
furnished

Limited
Units
for sale

GLOMAC KRISTAL SDN BHD 791194-H

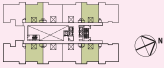
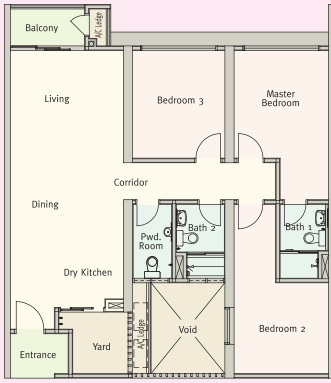
Level 1, Menara Glomac, Glomac Damansara, Jalan Damansara, 60000 Kuala Lumpur, Malaysia

T 03 7723 9101 F 03 7729 7000 E sales@glomac.com my W www.glomac.com.my

FLOOR PLAN

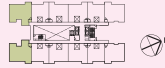
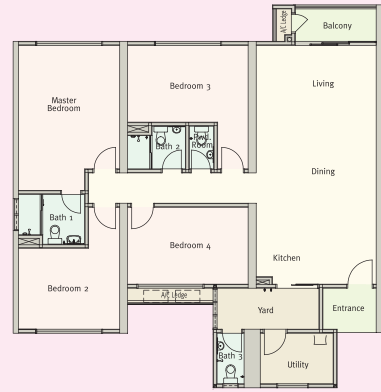
TYPE A

3 bedrooms
109.2 sq.m. / 1,175 sq.ft.



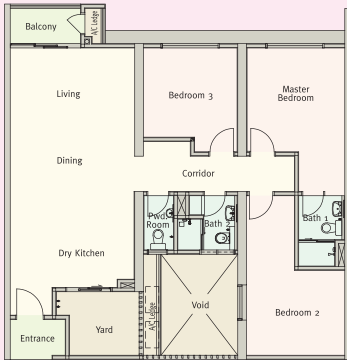
TYPE D

4+1 bedrooms
155.1 sq.m. / 1,670 sq.ft.

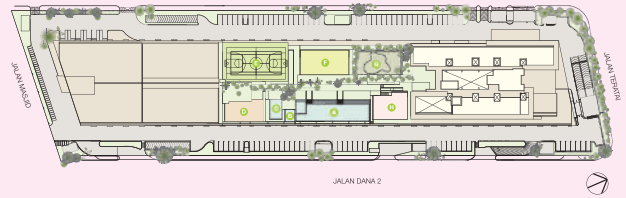


TYPE B

3 bedrooms
118.8 sq.m. / 1,279 sq.ft.



FACILITIES PLAN



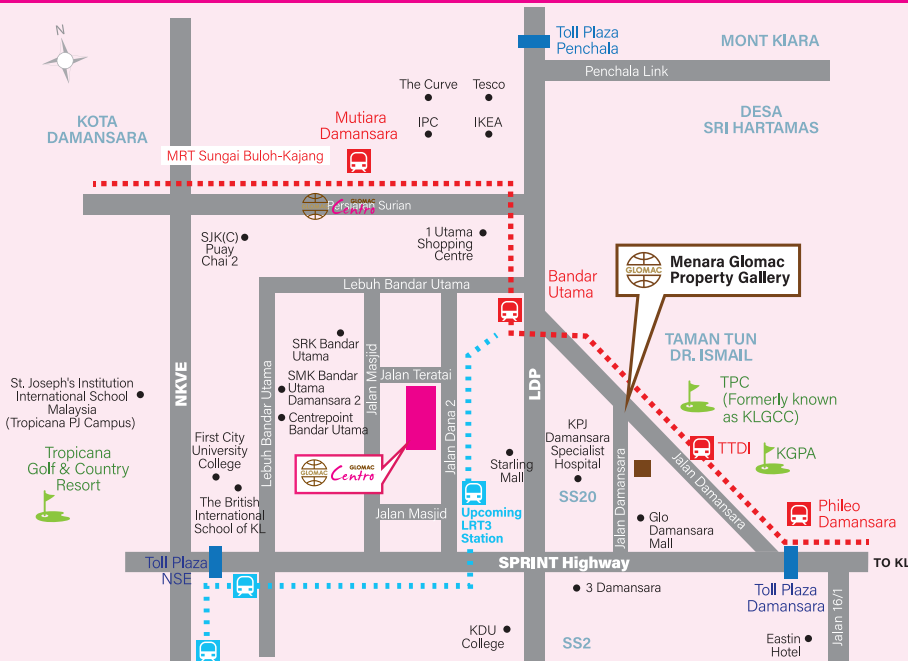
LEGEND

- A Swimming Pool
- B Jacuzzi
- C Children's Pool
- D BBQ Pit
- E Tennis Court
- F Multipurpose Hall
- G Children's Playground
- H Gym

*All plans, layouts, information and specifications are subject to change and cannot form part of an offer or contract presentation.

PRIME PJ - DAMANSARA

VALUABLE LOCATION



APPROXIMATE DISTANCE FROM GLOMAC CENTRO TO:

- SPRINT Highway 5 km
- NKVE 10 km
- Penchala Link 15 km
- Federal Highway 20 km
- Kerinchi Link 20 km