



HIP & HAPPENING BUSINESS HUB IN THE HEART OF PJ-DAMANSARA

YOUR **TOP 3** REASONS TO INVEST HERE!

PRACTICAL LAYOUTS

- Flexible & functional layout
- Practical design with boulevard walkway

COMPLETED & READY FOR TENANTS

- Immediate residential population from serviced apartments
- Booming surrounding neighbourhoods

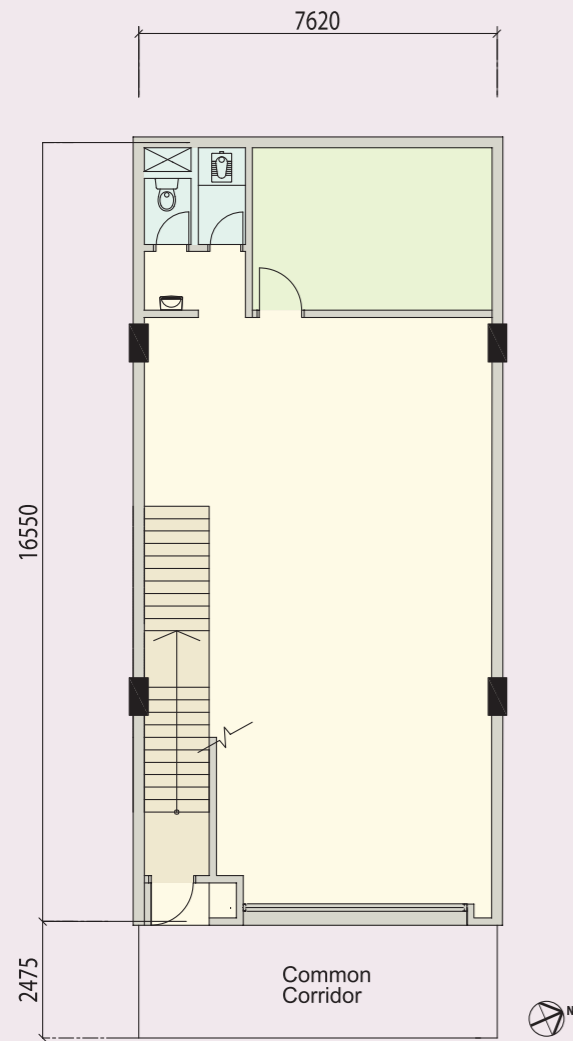
STRATEGIC LOCATION

- Nearby established townships such as Bandar Utama & Damansara Jaya
- Connected via major highways such as SPRINT, NKVE & LDP



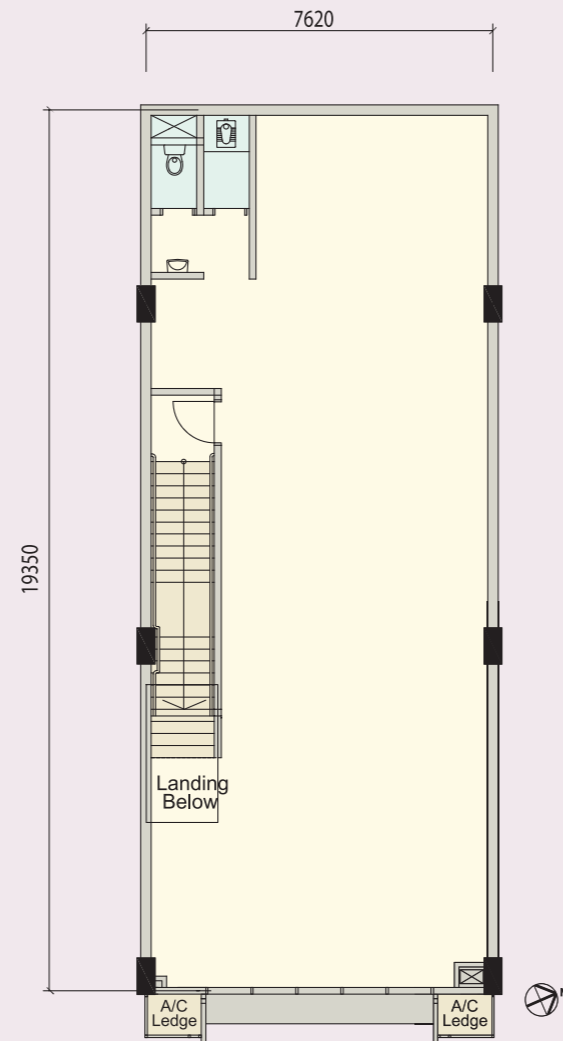
2-STOREY SHOP-OFFICES FLOOR PLANS*

GROUND FLOOR



INTERMEDIATE TYPICAL LOT
119.42 sq.m. / 1,285.47 sq.ft.

FIRST FLOOR



INTERMEDIATE TYPICAL LOT
152.17 sq.m. / 1,637.99 sq.ft.

BUILDING SPECIFICATIONS**

STRUCTURE	Reinforced Concrete Structure Frame
BRICK	Masonry Bricks
ROOF	Reinforced Concrete Slab and / or Metal Roofing Sheet
CEILING	Shop - Skim Coat & Paint to RC Soffit and Suspended Ceiling where required
WINDOWS	Not Available
DOORS	Roller Shutter to Shop
IRONMONGERY	Generally Quality Lock Set
FLOOR FINISHES	Shop - Cement Render Basin area - Porcelain Tiles
WALL FINISHES	Shop - Plaster and Paint Basin area - Ceramic Tiles 7ft high
SANITARY FINISHES	Basin - 1 Nos

M&E INSTALLATIONS	Shop
Lightning Point	3
13A Power Point	2
A/C Point	1
Telephone Fiber Wall Socket	1
30A SPN DB	1

**Please note that the above specifications only apply to each floor unit respectively.

LAYOUT PLAN



*All plans, layouts, information and specifications are subject to change and cannot form part of an offer or contract presentation.

PRIME PJ - DAMANSARA

VALUABLE LOCATION



APPROXIMATE DISTANCE FROM GLOMAC CENTRO TO:

- SPRINT Highway 5 km
- NKVE 10 km
- Penchala Link 15 km
- Federal Highway 20 km
- Kerinchi Link 20 km



For more information, call:
1800 88 9000 / 03 7723 9000 or visit www.glomac.com.my

Sales Gallery Opens Monday - Friday From 10am - 6pm

Head Office
 Level 1, Menara Glomac, Glomac Damansara, Jalan Damansara, 60000 Kuala Lumpur, Malaysia
Sales Office
 Level 1, Menara Glomac, Glomac Damansara, Jalan Damansara, 60000 Kuala Lumpur, Malaysia

GLOMAC KRISTAL SDN BHD 791194-H

T 03 7723 9000 W www.glomac.com.my
 F 03 7729 7000 E sales@glomac.com.my

All art rendering and photographs contained are artist impression only. All the above items are subject to variations, modifications and substitutions as may be required by the Authorities and the architect and engineer. All plans, layouts, information and specifications are subject to change and cannot form part of the offer or contract. While every reasonable care has been taken in preparing this project brief, the developer cannot be held responsible for any variations or inaccuracy. * Terms and conditions apply.